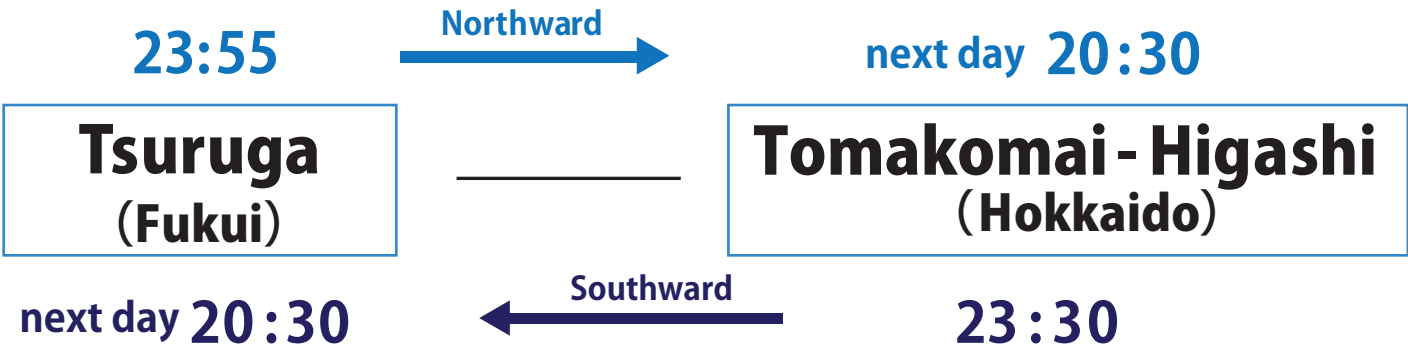


# Tsuruga ~ Tomakomai-Higashi



## Timetable



## Fares & Charges

Period A	Northward	September 1st 2024 - January 31th, 2025
	Southward	

### Passenger Fares & Charges [Yen]

Cabin	Tourist A	Tourist S	State room A	Deluxe room A	Junior suite room	Suite room
Period A	¥12,000	¥19,000	¥24,000	¥34,600	¥51,400	¥61,600※

※Including meals while onboard  
○ In Period A, a room for 4 people can't be used by only one person.  
○ The fare for children is half of the adult fare. An infant is free of charge if he or she sleeps together with an adult.  
In the case there are two or more infants per an adult, it costs child charge for them.

### Passenger Car Fares [Yen] \*Including a driver's passenger fare (basic fare)

Cabin	Less than 3m	Less than 4m	Less than 5m	Less than 6m
Period A	¥33,400	¥35,800	¥37,500	¥45,400

### Bicycle (Including a folding bicycle)

Period A	¥3,600
----------	--------

Sometimes, fares and schedule might change.

# September Sailing Schedule

2024.9.1 ~ 2024.9.30  
( Plan )

North ward	Departure	time	Arrival	time		note	1	2	3	4	5	6	7	8	9	10	11	12	13	14	15	16	17	18	19	20	21	22	23	24	25	26	27	28	29	30	
							Sun	Mon	Tue	Wed	Thu	Fri	Sat	Sun	Mon	Tue	Wed	Thu	Fri	Sat	Sun	Mon	Tue	Wed	Thu	Fri	Sat	Sun	Mon	Tue	Wed	Thu	Fri	Sat	Sun	Mon	
	MAIZURU	23:50	OTARU	next day	20:45		○	○	○	○	○	○	○	○	○	○	○	○	○	○	○	○	○	○	○	○	○	○	○	○	○	○	○	○	○	○	○
	TSURUGA	23:55	TOMAKOMAI	next day	20:30	direct route	○	○	○	○	○	○	○	○	○	○	○	○	○	○	○	○	○	○	○	○	○	○	○	○	○	○	○	○	○	○	○
		9:30	NIIGATA		21:30			○								○																				○	
			AKITA	next day	5:05																																
			TOMAKOMAI	next day	16:45																																indirect route
	NIIGATA	12:00	OTARU	next day	4:30		○		○	○	○	○	○	○	○		○	○	○	○	○	○		○	○	○	○	○	○		○	○	○	○	○		
		22:30	AKITA	next day	5:05				○	○	○	○	○	○	○	○		○	○	○	○	○	○	○	○	○	○	○	○		○	○	○	○	○		
			TOMAKOMAI	next day	16:45																																
AKITA	6:15	TOMAKOMAI		16:45		○		○	○	○	○	○	○	○		○	○	○	○	○	○		○	○	○	○	○	○		○	○	○	○	○	○		

South ward	Departure	time	Arrival	time		note	1	2	3	4	5	6	7	8	9	10	11	12	13	14	15	16	17	18	19	20	21	22	23	24	25	26	27	28	29	30
							Sun	Mon	Tue	Wed	Thu	Fri	Sat	Sun	Mon	Tue	Wed	Thu	Fri	Sat	Sun	Mon	Tue	Wed	Thu	Fri	Sat	Sun	Mon	Tue	Wed	Thu	Fri	Sat	Sun	Mon
	OTARU	23:30	MAIZURU	next day	21:15		○	○	○	○	○	○	○	○	○	○	○	○	○	○	○	○	○	○	○	○	○	○	○	○	○	○	○	○	○	○
17:00		NIIGATA	next day	9:15			○	○	○	○	○	○	○		○	○	○	○	○	○		○	○	○	○	○	○		○	○	○	○	○		○	
TOMAKOMAI -HIGASHI	23:30	TSURUGA	next day	20:30	direct route	○	○	○	○	○	○	○	○	○	○	○	○	○	○	○	○	○	○	○	○	○	○	○	○	○	○	○	○	○	○	
	19:30	AKITA	next day	7:35			○	○	○	○	○	○	○		○	○	○	○	○		○	○	○	○	○	○	○		○	○	○	○	○			
		NIIGATA	next day	15:30																																
		TSURUGA	two days later	5:30	indirect route							○							○						○							○				
AKITA	8:35	NIIGATA		15:30		○		○	○	○	○	○	○	○		○	○	○	○	○	○		○	○	○	○	○	○		○	○	○	○	○		
		TSURUGA	next day	5:30		○								○							○						○							○		
NIIGATA	16:30	TSURUGA	next day	5:30										○							○						○							○		

・"TOMAKOMAI-HIGASHI" is Tomakomai east Terminal , Syubun Pier.  
・The ship and sailing schedule may be unavoidably changed .

# October Sailing Schedule

2024.10.1 ~ 2024.10.31  
( Plan )

North ward	Departure	time	Arrival	time		note	1	2	3	4	5	6	7	8	9	10	11	12	13	14	15	16	17	18	19	20	21	22	23	24	25	26	27	28	29	30	31																											
							Tue	Wed	Thu	Fri	Sat	Sun	Mon	Tue	Wed	Thu	Fri	Sat	Sun	Mon	Tue	Wed	Thu	Fri	Sat	Sun	Mon	Tue	Wed	Thu	Fri	Sat	Sun	Mon	Tue	Wed	Thu																											
	MAIZURU	23:50	OTARU	next day	20:45		○	○	○	○	○	○	○	○	○	○	○	○	—	○	○	○	○	○	—	○	○	○	○	○	○	○	—	○	○	○	○																											
	TSURUGA	23:55	TOMAKOMA I	next day	20:30	direct route	○	○	○	○	○	○	○	○	○	○	○	○	—	○	○	○	○	○	○	○	○	○	○	○	○	○	○	○	○	○																												
		9:30	NIIGATA		21:30																																																											
			AKITA	next day	5:05																																indirect route																											
			TOMAKOMA I	next day	16:45																																																											
	NIIGATA	12:00	OTARU	next day	4:30		○	○	○	○	○	○		○	○	○	○	○	○		○	○	○	○	○	○		○	○	○	○	○	○		○	○	○																											
		22:30	AKITA	next day	5:05																																																											
			TOMAKOMA I	next day	16:45																																																											
AKITA	6:15	TOMAKOMA I		16:45		○	○	○	○	○	○		○	○	○	○	○	○		○	○	○	○	○	○		○	○	○	○	○	○		○	○	○																												

South ward	Departure	time	Arrival	time		note	1	2	3	4	5	6	7	8	9	10	11	12	13	14	15	16	17	18	19	20	21	22	23	24	25	26	27	28	29	30	31
							Tue	Wed	Thu	Fri	Sat	Sun	Mon	Tue	Wed	Thu	Fri	Sat	Sun	Mon	Tue	Wed	Thu	Fri	Sat	Sun	Mon	Tue	Wed	Thu	Fri	Sat	Sun	Mon	Tue	Wed	Thu
	OTARU	23:30	MAIZURU	next day	21:15		○	○	○	○	○	○	○	○	○	○	○	○	○	—	○	○	○	○	○	—	○	○	○	○	○	○	—	○	○	○	○
		17:00	NIIGATA	next day	9:15		○	○	○	○	○		○	○	○	○	○	○		○	○	○	○	○	○		○	○	○	○	○	○		○	○	○	○
	TOMAKOMAI -HIGASHI	23:30	TSURUGA	next day	20:30	direct route	○	○	○	○	○	○	○	○	○	○	○	○	—	○	○	○	○	○	○	○	○	○	○	○	○	○	○	○	○	○	○
		19:30	AKITA	next day	7:35	indirect route	○	○	○	○	○		○	○	○	○	○	○		○	○	○	○	○	○		○	○	○	○	○	○		○	○	○	○
			NIIGATA	next day	15:30																																
			TSURUGA	two days later	5:30						○						○									○					○						
	AKITA	8:35	NIIGATA		15:30		○	○	○	○	○	○		○	○	○	○	○	○		○	○	○	○	○	○		○	○	○	○	○	○		○	○	○
			TSURUGA	next day	5:30						○															○											
NIIGATA	16:30	TSURUGA	next day	5:30							○							○							○						○						

•“TOMAKOMAI-HIGASHI” is Tomakomai east Terminal , Syubun Pier.  
•The ship and sailing schedule may be unavoidably changed .

# November Sailing Schedule

2024. 11. 1 ~ 2024. 11. 30  
( Plan )

North ward	Departure	time	Arrival	time		note	1	2	3	4	5	6	7	8	9	10	11	12	13	14	15	16	17	18	19	20	21	22	23	24	25	26	27	28	29	30	
							Fri	Sat	Sun	Mon	Tue	Wed	Thu	Fri	Sat	Sun	Mon	Tue	Wed	Thu	Fri	Sat	Sun	Mon	Tue	Wed	Thu	Fri	Sat	Sun	Mon	Tue	Wed	Thu	Fri	Sat	
	MAIZURU	23:50	OTARU	next day	20:45		○	○	○	—	○	○	○	○	○	—	○	○	○	○	○	○	—	○	○	○	○	○	○	○	○	○	○	○	○	○	○
	TSURUGA	23:55	TOMAKOMA I	next day	20:30	direct route	○	○	—	○	○	○	○	○	○	○	○	○	○	○	○	○	○	○	○	○	○	○	○	○	—	○	○	○	○	○	
			NIIGATA		21:30																																
		AKITA	next day	5:05					—						○							○								○							
		TOMAKOMA I	next day	16:45	indirect route																																
	NIIGATA	12:00	OTARU	next day	4:30		○	○	○		○	○	○	○	○	○		○	○	○	○	○	○		○	○	○	○	○	○		○	○	○	○	○	
			22:30	AKITA	next day	5:05		○	○		—	○	○	○	○	○		○	○	○	○	○	○		○	○	○	○	○		○	○	○	○	○	○	
		TOMAKOMA I		next day	16:45																																
AKITA	6:15	TOMAKOMA I		16:45		○	○	○		—	○	○	○	○	○		○	○	○	○	○	○	○		○	○	○	○	○	○		○	○	○	○	○	

South ward	Departure	time	Arrival	time		note	1	2	3	4	5	6	7	8	9	10	11	12	13	14	15	16	17	18	19	20	21	22	23	24	25	26	27	28	29	30	
							Fri	Sat	Sun	Mon	Tue	Wed	Thu	Fri	Sat	Sun	Mon	Tue	Wed	Thu	Fri	Sat	Sun	Mon	Tue	Wed	Thu	Fri	Sat	Sun	Mon	Tue	Wed	Thu	Fri	Sat	
	OTARU	23:30	MAIZURU	next day	21:15		○	○	○	—	○	○	○	○	○	○	—	○	○	○	○	○	○	—	○	○	○	○	○	○	○	○	○	○	○	○	○
		17:00	NIIGATA	next day	9:15		○	○		○	○	○	○	○	○	○		○	○	○	○	○	○		○	○	○	○	○	○		○	○	○	○	○	
	TOMAKOMAI -HIGASHI	23:30	TSURUGA	next day	20:30	direct route	○	○	—	○	○	○	○	○	○	○	○	○	○	○	○	○	○	○	○	○	○	○	○	—	○	○	○	○	○	○	
		19:30	AKITA	next day	7:35	indirect route	○	○		—	○	○	○	○	○		○	○	○	○	○	○		○	○	○	○	○	○		○	○	○	○	○	○	
			NIIGATA	next day	15:30																																
			TSURUGA	two days later	5:30			—							○					○								○								○	
	AKITA	8:35	NIIGATA		15:30		○	○	○		—	○	○	○	○	○	○		○	○	○	○	○	○		○	○	○	○	○		○	○	○	○	○	
			TSURUGA	next day	5:30																																
NIIGATA	16:30	TSURUGA	next day	5:30					—							○							○							○							

•“TOMAKOMAI-HIGASHI” is Tomakomai east Terminal , Syubun Pier.  
•The ship and sailing schedule may be unavoidably changed .

# December Sailing Schedule

2024. 12. 1 ~ 2024. 12. 31  
( Plan )

North ward	Departure	time	Arrival	time		note	1	2	3	4	5	6	7	8	9	10	11	12	13	14	15	16	17	18	19	20	21	22	23	24	25	26	27	28	29	30	31			
							Sun	Mon	Tue	Wed	Thu	Fri	Sat	Sun	Mon	Tue	Wed	Thu	Fri	Sat	Sun	Mon	Tue	Wed	Thu	Fri	Sat	Sun	Mon	Tue	Wed	Thu	Fri	Sat	Sun	Mon	Tue			
	MAIZURU	23:50	OTARU	next day	20:45		—	○	○	○	○	○	○	○	○	○	○	○	○	○	○	—	○	○	○	○	○	○	○	—	○	—	○	—	○	—	—	—		
	TSURUGA	23:55	TOMAKOMAI -HIGASHI	next day	20:30	direct route	○	○	○	○	○	○	○	—	○	○	○	○	○	○	○	○	○	○	○	○	○	○	—	○	○	○	○	○	○	○	—	—		
	TSURUGA	9:30	NIIGATA		21:30	indirect route		○																												—				
			AKITA	next day	5:05																																	○	○	—
			TOMAKOMAI -HIGASHI	next day	16:45																																			
	NIIGATA	12:00	OTARU	next day	4:30		○		○	○	○	○	○	○		○	○	○	○	○	○	○		○	○	○	○	○	○		○	○	○	○	○	○	○	—		
		22:30	AKITA	next day	5:05				○		○	○	○	○	○	○		○	○	○	○	○	○		○	○	○	○	○	○	○	○	○		—	—				
			TOMAKOMAI -HIGASHI	next day	16:45																																			
AKITA	6:15	TOMAKOMAI -HIGASHI		16:45		○		○	○	○	○	○	○		○	○	○	○	○	○	○		○	○	○	○	○	○		○	○	○	○	○	○		—			

South ward	Departure	time	Arrival	time		note	1	2	3	4	5	6	7	8	9	10	11	12	13	14	15	16	17	18	19	20	21	22	23	24	25	26	27	28	29	30	31	
							Sun	Mon	Tue	Wed	Thu	Fri	Sat	Sun	Mon	Tue	Wed	Thu	Fri	Sat	Sun	Mon	Tue	Wed	Thu	Fri	Sat	Sun	Mon	Tue	Wed	Thu	Fri	Sat	Sun	Mon	Tue	
	OTARU	23:30	MAIZURU	next day	21:15		—	○	○	○	○	○	○	○	○	○	○	○	○	○	○	—	○	○	○	○	○	○	—	○	—	○	—	○	—	—	—	—
23:30		TSURUGA	next day	20:30																							○											
17:00		NIIGATA	next day	9:15			○	○	○	○	○	○	○		○	○	○	○	○	○		○	○	○	○	○	○		○	○	○	○	○	○	○	—	—	
TOMAKOMAI -HIGASHI	23:30	TSURUGA	next day	20:30	direct route	○	○	○	○	○	○	○	—	○	○	○	○	○	○	○	○	○	○	○	○	○	○	—	○	○	○	○	○	○	○	○	—	—
	19:30	AKITA	next day	7:35	indirect route		○	○	○	○	○	○		○	○	○	○	○	○	○		○	○	○	○	○	○		○	○	○	○	○	○	○		—	—
		NIIGATA	next day	15:30																																		
		TSURUGA	two days later	5:30								○						○									○							—				
AKITA	8:35	NIIGATA		15:30		○		○	○	○	○	○	○		○	○	○	○	○	○	○		○	○	○	○	○		○	○	○	○	○	○	○		—	
		TSURUGA	next day	5:30		○															○													—				
NIIGATA	16:30	TSURUGA	next day	5:30										○							○							○							—			

• “TOMAKOMAI-HIGASHI” is Tomakomai east Terminal , Syubun Pier.  
• There are cases where the ship and sailing schedule may be unavoidably changed.

# January Sailing Schedule

2025. 1. 1 ~ 2025. 1. 31  
( Plan )

North ward	Departure	time	Arrival	time		note	1	2	3	4	5	6	7	8	9	10	11	12	13	14	15	16	17	18	19	20	21	22	23	24	25	26	27	28	29	30	31	
							Wed	Thu	Fri	Sat	Sun	Mon	Tue	Wed	Thu	Fri	Sat	Sun	Mon	Tue	Wed	Thu	Fri	Sat	Sun	Mon	Tue	Wed	Thu	Fri	Sat	Sun	Mon	Tue	Wed	Thu	Fri	
	MAIZURU	23:50	OTARU	next day	20:45					○			○		○					○		○					○		○		○		○		○		○	
		23:50	TOMAKOMAI -HIGASHI	翌日	20:30														○																			
	TSURUGA	23:55	TOMAKOMAI -HIGASHI	next day	20:30	direct route	—	○	○	○	○	○	○	○	○	○	○	○	—	○	○	○	○	○	○	○	○	○	○	○	○	○	○	○	○	○	○	○
		9:30	NIIGATA		21:30	indirect route																																
			AKITA	next day	5:05							○																							○			
			TOMAKOMAI -HIGASHI	next day	16:45																																	
	NIIGATA	12:00	OTARU	next day	4:30		—	—	○	○	○		○	○	○	○	○	○	○		○	○	○	○	○	○		○	○	○	○	○	○		○	○	○	○
		22:30	AKITA	next day	5:05					○			○		○		○				○		○		○		○		○		○		○		○		○	
TOMAKOMAI -HIGASHI			next day	16:45																																		
AKITA	6:15	TOMAKOMAI -HIGASHI		16:45					○			○		○		○				○		○		○		○		○		○			○		○		○	

South ward	Departure	time	Arrival	time		note	1	2	3	4	5	6	7	8	9	10	11	12	13	14	15	16	17	18	19	20	21	22	23	24	25	26	27	28	29	30	31
							Wed	Thu	Fri	Sat	Sun	Mon	Tue	Wed	Thu	Fri	Sat	Sun	Mon	Tue	Wed	Thu	Fri	Sat	Sun	Mon	Tue	Wed	Thu	Fri	Sat	Sun	Mon	Tue	Wed	Thu	Fri
	OTARU	23:30	MAIZURU	next day	21:15				○			○		○				○				○					○		○		○		○	○		○	
		17:00	NIIGATA	next day	9:15		—	○	○	○		○	○	○	○	○	○		○	○	○	○	○	○		○	○	○	○	○		○	○	○	○	○	
	TOMAKOMAI -HIGASHI	23:30	MAIZURU	next day	21:15															○																	
		23:30	TSURUGA	next day	20:30	direct route	—	○	○	○	○	○	○	○	○	○	○	○	—	○	○	○	○	○	○	○	○	○	○	○	○	○	○	○	○	○	○
		19:30	AKITA	next day	7:35	indirect route				○	○			○		○		○			○		○				○			○		○		○		○	
			NIIGATA	next day	15:30																																
			TSURUGA	two days later	5:30						○							○						○						○							
	AKITA	8:35	NIIGATA		15:30					○	○			○		○		○			○		○		○			○		○		○			○		○
TSURUGA			next day	5:30																																	
NIIGATA	16:30	TSURUGA	next day	5:30						○								○							○						○						

- “TOMAKOMAI-HIGASHI” is Tomakomai east Terminal , Syubun Pier.
- There are cases where the ship and sailing schedule may be unavoidably changed.





Prescribed number of passengers: 613  
 Total length: 224.5 m Total tonnage: 17,382 tons  
 Service speed: 27.5 knots  
 Vehicle capacity: 158 trucks, 58 passenger vehicles

〔 The ships 〕

Tsuruga ⇄  
 Tomakomai Higashi route

Suzuran  
 Suisen

## Cabins

### Suites Twin

Spacious guest cabins, private terraces and ocean-view bathrooms.  
 We will make this trip just for the two of you one to remember.

**Facilities** Bath, bidet, washroom, television (broadcasting satellite compatible), DVD player, refrigerator, locker, safety deposit box and private terrace

**Items provided** Yukata, bath towels, bath robes, face towels, slippers, water boiler/thermos bottle, tea making set, hair dryer, soap, shampoo that contains conditioner, body soap, toothbrush, razor, tissues, shower cap, hair brush and ladies' kit (cotton swabs, cotton balls and hair elastics)

**Privileges** One breakfast, one lunch and one dinner included (whether traveling north or south) and free DVD rental



Bathroom



Twin

### Junior Suite

Twin

A special, functional cabin with a private terrace.  
 Enjoy a cruise that will stay with you.

**Facilities** Bath (with no view), bidet, washroom, television (broadcasting satellite compatible), DVD player, refrigerator, locker, safety deposit box and private terrace

**Items provided** Yukata, bath towels, bath robes, face towels, slippers, water boiler/thermos bottle, tea making set, hair dryer, soap, shampoo that contains conditioner, body soap, toothbrush, razor, tissues, shower cap, hair brush and ladies' kit (cotton swabs, cotton balls and hair elastics)

**Privileges** One breakfast, one lunch and one dinner included (whether traveling north or south) and free DVD rental



Twin



Bathroom

### Deluxe Room A

Twin, Japanese-style (capacity:2-3)

All cabins have ocean views.  
 Gaze at the ocean from your sofa, and when the time is right go to the private balcony to enjoy a comfortable breeze.

**Facilities** Bath, bidet, washroom, television (broadcasting satellite compatible), refrigerator, locker, safety deposit box and private terrace

**Items provided** Yukata, bath towels, face towels, slippers, water boiler/thermos bottle, tea making set, hair dryer, soap, shampoo that contains conditioner, toothbrush and tissues



Twin



Japanese-style room

### State Room A

Twin, Japanese-style (capacity:2-3), Two bunk beds (capacity:4)

A peaceful space where soft, natural light pours in.  
 Choose a cabin that matches your travel style.

\*There is no view from the window in Twin room.

**Facilities** Washroom, bidet, television (broadcasting satellite compatible), refrigerator and locker

**Items provided** Yukata, face towels, slippers, water boiler/thermos bottle, tea making set, soap, tissues and toothbrush



Twin



Japanese-style room



Two bunk beds

### Tourist S (Not a private cabin.)

This is a comfortable bedroom for one person with a television. Relax comfortably in the single-level bed (not a bunk bed).

**Facilities** Baggage rack, television

**Items provided** Bed covering, pillow, sheets



### Tourist A (berth)

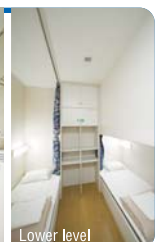
These cabins are perfect for group trips with people you get along well with.

**Facilities** Baggage rack

**Items provided** Bed covering, pillow, sheets



Upper level



Lower level

Guest cabins and common areas are all nonsmoking. Only smoke in designated areas.

Note: The photos are for illustrative purposes only.



# Inboard facilities



Entrance



Grill

Offers cruise lunches and dinners made with carefully selected ingredients from Hokkaido, the Sea of Japan and elsewhere.  
(Note: By reservation. Open April to October.)



Restaurant

Get your fill of delicious meals while on board the ship.



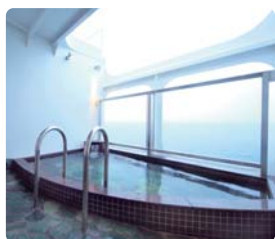
Cafeteria

Soft drinks and snacks are available for passengers to enjoy.



Grand bath (with sauna)<sup>\*1, \*2</sup>

Enjoy a luxurious time while gazing at the horizon.



Open air bath<sup>\*2</sup>

This is an exceptional bathing experience of gazing at the grandeur of the ocean and sky while exposed to the breeze from the Sea of Japan.



Sauna<sup>\*2</sup>

A sauna so authentic you wouldn't know it was on a ship. Work up a good sweat and refresh your spirits!



Promenade

Passengers can look out on the endless sea from this reception room with a view on the side of the boat.



Forward saloon<sup>\*3</sup>

Passengers can look out on the endless sea from this reception room with a view on the front of the boat.



Conference room

A movie screening space befitting a large ship.



Games room

This is an amusement arcade full of fun games.



Sports room

Refresh your spirits through physical exercise while looking out at the ocean!



Amusement room<sup>\*4</sup>

Enjoy watching DVDs or karaoke with your friends.



Kids' room

Small children will not get bored here.



Shop

This shop offers a selection of original goods and souvenirs.



Dog field<sup>\*5</sup>

If you brought your pet with you, we've got you covered! This is a space where you can relax and play with your dog.



Cup noodle corner

Several types of cup noodles are on sale here. You can prepare and eat them here as well.



Information desk



Vending machines



Maritime telephone<sup>\*6</sup>

<sup>\*1</sup> There are body soap, shampoo containing conditioner, hair dryers and refundable 100-yen coin lockers available. Also, towel sets are available for rental (300 yen) at the information desk.

<sup>\*2</sup> People with tattoos are not allowed to use. <sup>\*3</sup> The saloon may not be used to enjoy the view during the winter and during stormy weather.

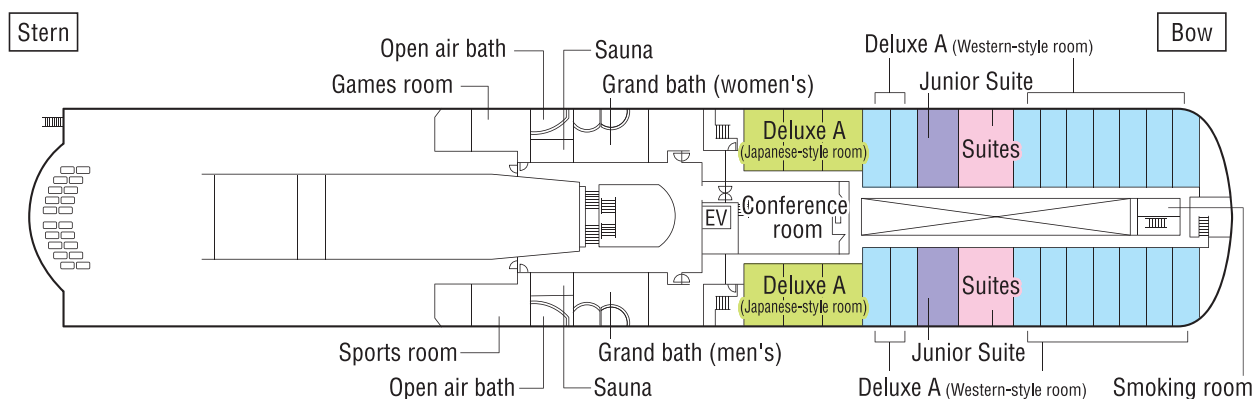
<sup>\*4</sup> Passengers can watch DVDs or sing karaoke. When singing karaoke, the price is 1,000 yen per hour for a 2-3 person room. There is a deposit of 1,000 yen. It is 3,000 yen per hour for a 5-6 person room with a deposit of 2,000 yen. The deposit will be refunded to you after the microphone and other equipment are returned. When watching a DVD, the price is 1,000 yen per room (500 yen to rent one DVD and a deposit of 500 yen). The deposit will be returned when the DVD is returned.

<sup>\*5</sup> Closed during winter (November to March) <sup>\*6</sup> The maritime telephone is operated with 100 yen coins.

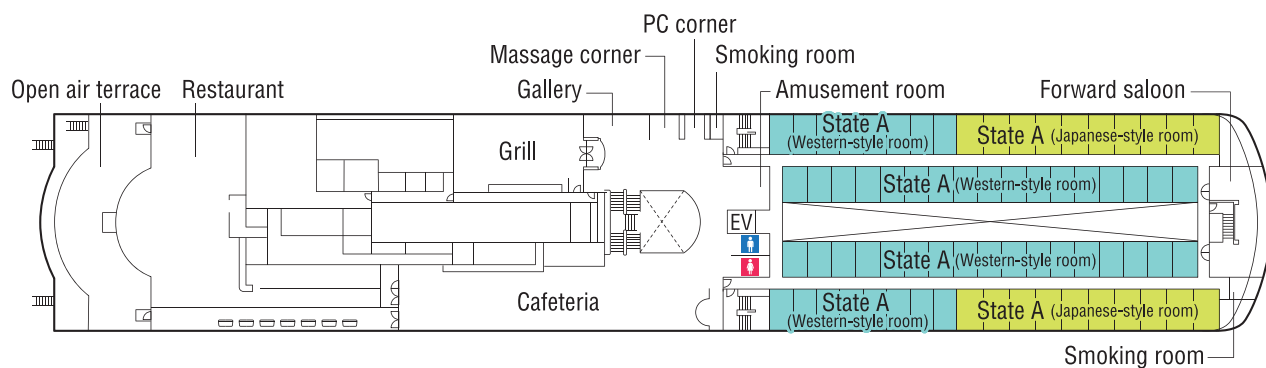


# Deck plan

6F



5F



4F

